

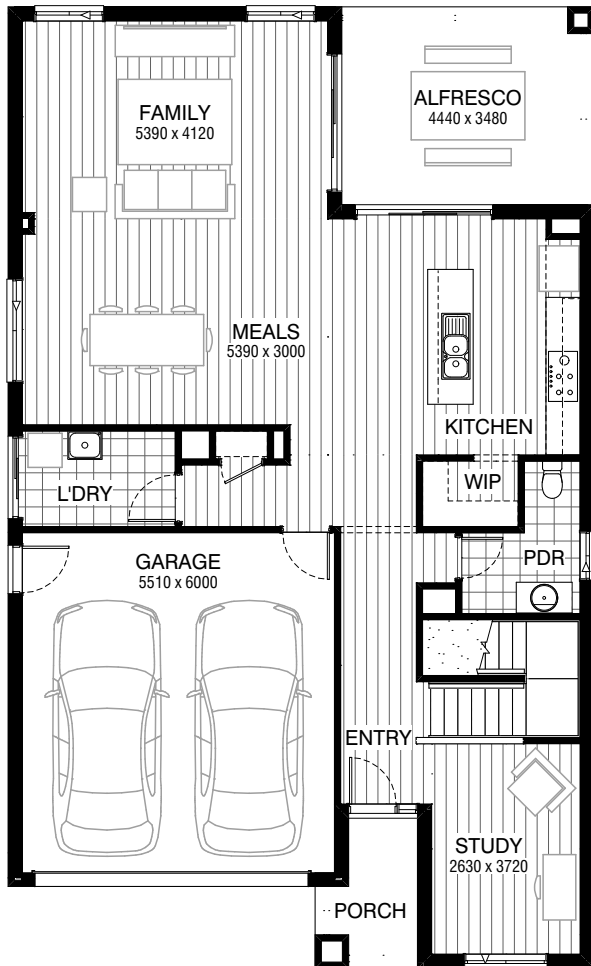
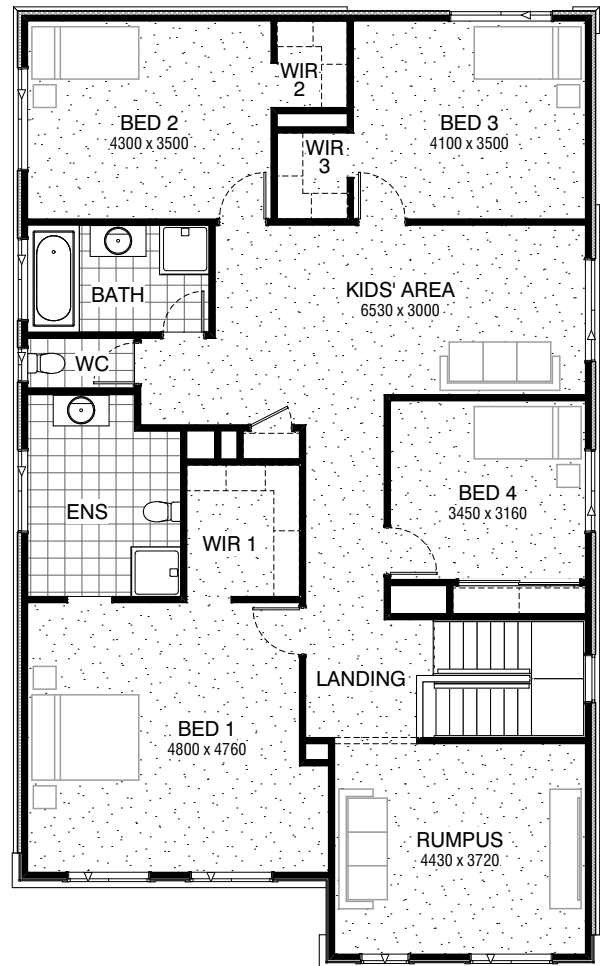


Total squares **35.0sq**

 **4**  **2.5**  **2**



GROUND FLOOR



FIRST FLOOR

**FLOORPLAN OPTIONS**

All available ready-to-go floorplan options for this design can be viewed on the following pages, or visit [www.burbank.com.au](http://www.burbank.com.au).

**Facades available:**

Condor, Matisse, Monet

**Overall home width 10.31m**

**Overall home length 16.91m**



Residence	269.5m <sup>2</sup>	29.0sq
Garage	36.1m <sup>2</sup>	3.9sq
Porch	4.0m <sup>2</sup>	0.4sq
Alfresco	15.5m <sup>2</sup>	1.7sq
<b>Total</b>	<b>325.1m<sup>2</sup></b>	<b>35.0sq</b>

Listed details based on Condor facade floorplan (illustrated)  
^ This design is suitable for small lot housing code

\*Copyright conditions. All photos and illustrations are representative only. Floor plans and specifications may be varied by Burbank without notice, the dimensions are diagrammatic only and a Building Contract with final drawings will display correct dimensions and detail. All designs are the property of Burbank and must not be used, reproduced, copied or varied, wholly or in part without written permission from an authorised Burbank representative. Copyright Burbank Australia Pty Ltd. ABN 91 007 099 872. Builders Registration Number CDB-U-52603.

**Call 13 BURBANK**  
**Visit [burbank.com.au](http://burbank.com.au)**

FLOORPLAN OPTIONS



 **4**  **2.5**  **2**



**KITCHEN OPTION  
STANDARD COLOUR BOARD**

Provide kitchen option with 1no. 900mm laminated hinged door above refrigerator space,  
2no. 900mm base cabinets, 1no. 900mm retractable rangehood with  
1no. 900mm underbench oven, 1no 900mm hotplate, 1no. laminated mw. provision with  
pot drawer below, 2no. 900mm overhead cabinets, 1no. 600mm overhead cupboard.  
provide 1no. 514mm x 2410mm aluminium fixed window. Reduce powder room size  
and provide 1no. 1027mm x 610mm aluminium sliding window in lieu of standard,  
adjust WIP shelving to suit and provide 2440mm ceiling to WIP only.  
Option contains standard specification

FLOORPLAN OPTIONS

 **4**  **2.5**  **2**

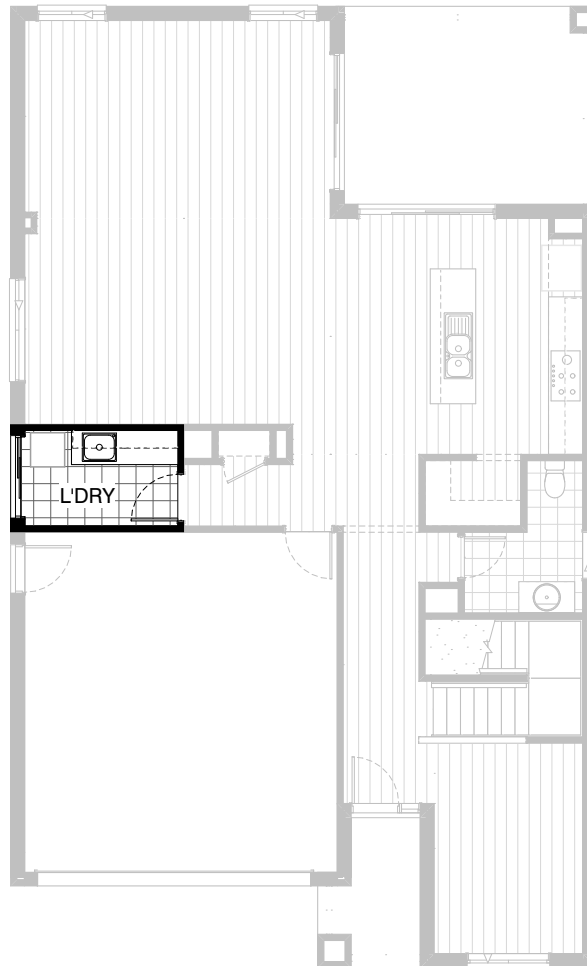


## KITCHEN OPTION UPGRADE COLOUR BOARD

Provide kitchen option with 1no. 900mm laminated hinged door above refrigerator space, 2no. 900mm base cabinets, 1no. 900mm retractable rangehood with 1no. 900mm underbench oven, 1no 900mm hotplate, 1no. laminated mw. provision with pot drawer below, 2no. 900mm overhead cabinets, 1no. 600mm overhead cupboard. provide 1no. 514mm x 2410mm aluminium fixed window. Reduce powder room size and provide 1no. 1027mm x 610mm aluminium sliding window in lieu of standard, adjust WIP shelving to suit and provide 2440mm ceiling to WIP only.  
Option provides upgrade specification

FLOORPLAN OPTIONS

 **4**  **2.5**  **2**



### LAUNDRY OPTION STANDARD COLOUR BOARD

Provide Laundry option with s.s. inset trough  
2no. 900mm base cabinets and 2no. 900mm overhead cabinets  
and additional tiled splashback and bench top to suit.  
Option contains standard specification

FLOORPLAN OPTIONS




 **4**  **2.5**  **2**

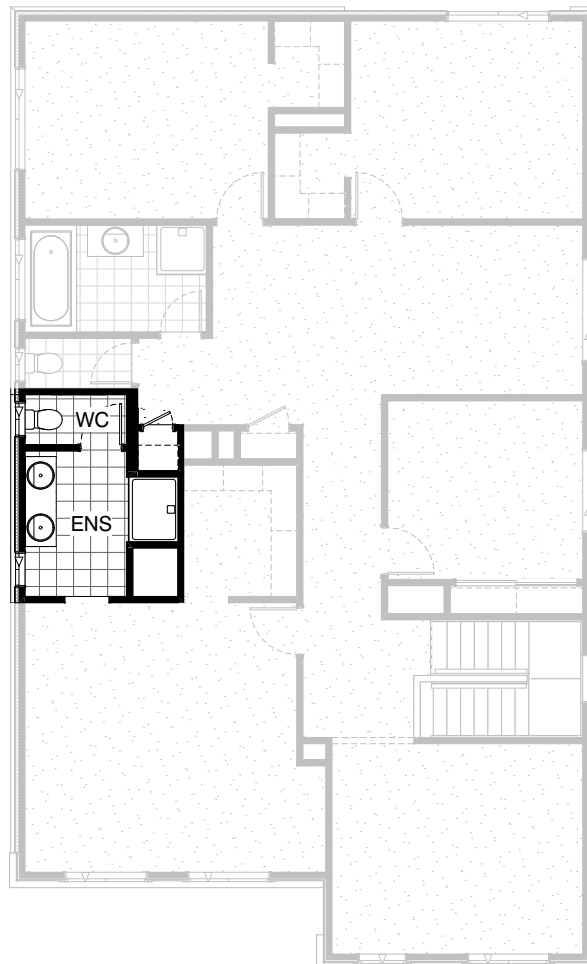


### LAUNDRY OPTION UPGRADE COLOUR BOARD

Provide Laundry Upgrade with s.s. inset trough  
2no. 900mm base cabinets and 2no. 900mm overhead cabinets  
and additional tiled splashback and bench top to suit.  
Option provides upgrade specification

FLOORPLAN OPTIONS

 **4**  **2.5**  **2**



## ENSUITE OPTION STANDARD COLOUR BOARD




Provide Ensuite Upgrade with 1no. 1200mm x 900mm polymarble shower base,  
1no. 1582mm wide vanity unit with 2no. basins in lieu of standard and  
1no. 1800mm x 610mm aluminium sliding window in lieu of standard.

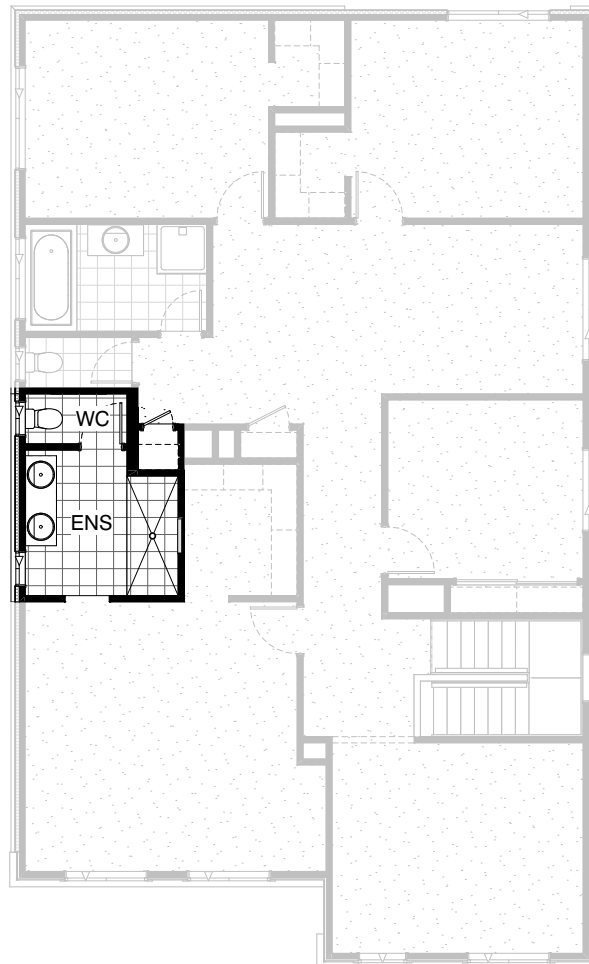
Site built plaster lined walls to WC with 1no. 720mm flush  
panel hinged door and 1no. 1027mm x 610mm aluminium  
sliding window to suit.

Provide site built plaster lined Linen cupboard with 4no. shelves  
and 1no. 520mm flush panel hinged door to suit.

Option contains standard specification

**FLOORPLAN OPTIONS**

 **4**  **2.5**  **2**



## **ENSUITE OPTION UPGRADE COLOUR BOARD**




Provide Ensuite Upgrade with 1no. 2100mm x 900mm tiled shower base with tiled niche,  
1no. 1582mm wide vanity unit with 2no. basins in lieu of standard and  
1no. 1800mm x 610mm aluminium sliding window in lieu of standard.

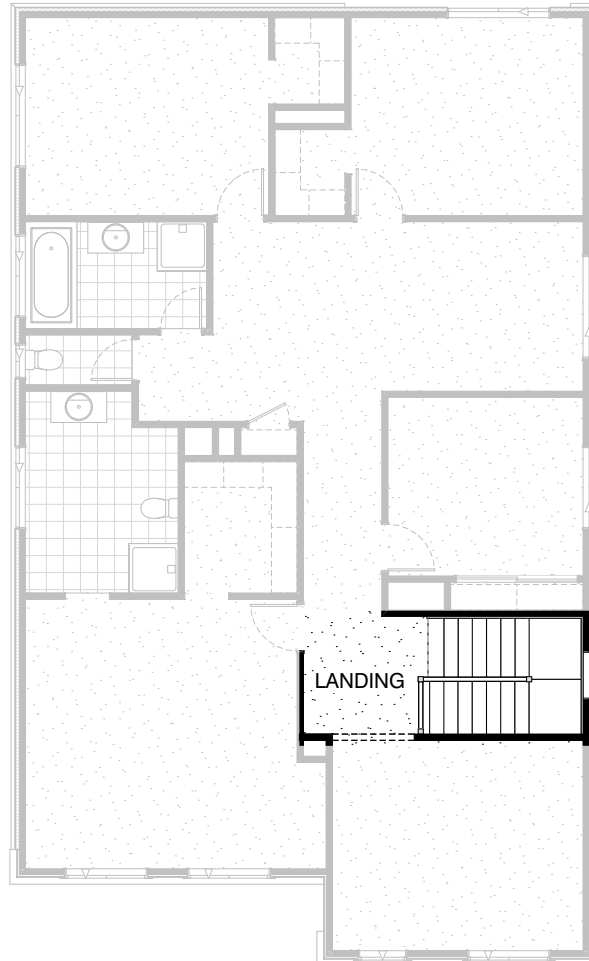
Site built plaster lined walls to WC with 1no. 720mm flush  
panel hinged door and 1no. 1027mm x 610mm aluminium  
sliding window to suit.

Provide site built plaster lined Linen cupboard with 4no. shelves  
and 1no. 520mm flush panel hinged door to suit.

Option provides upgrade specification

**FLOORPLAN OPTIONS**

 **4**    **2.5**    **2**






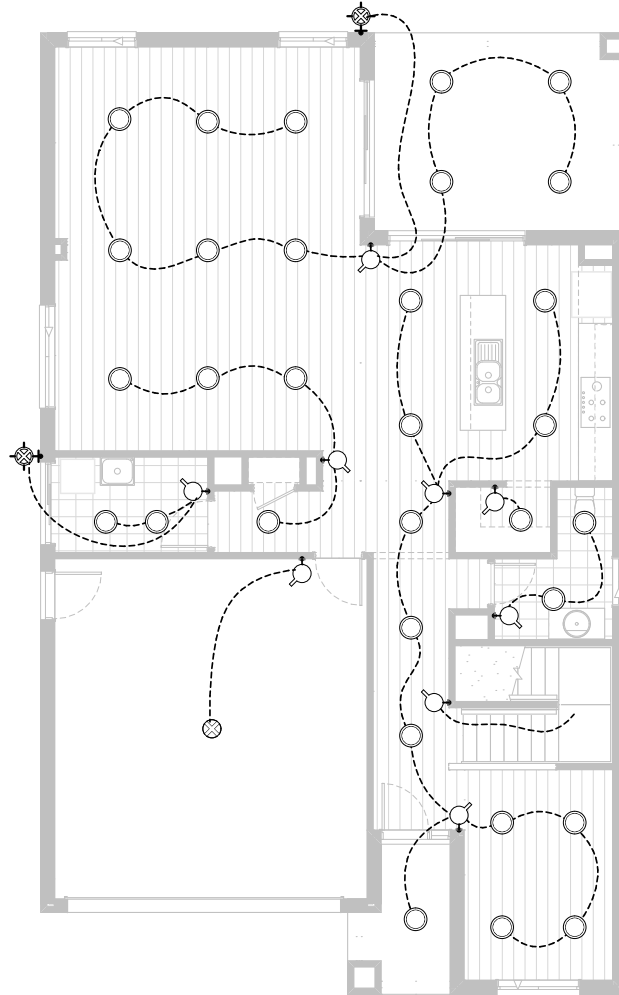
**UPGRADE STAIR OPTION**

Provide upgrade specification to existing stair layout.



**FLOORPLAN OPTIONS**




 **4**    **2.5**    **2**

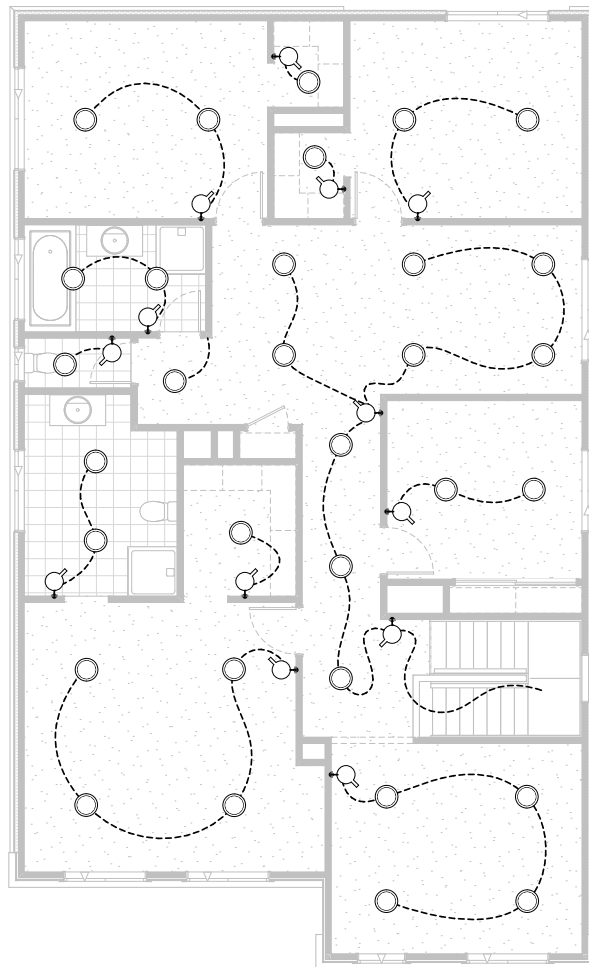


**Option ELE-1 GF**

Provide LED downlight upgrade

**FLOORPLAN OPTIONS**

 **4**    **2.5**    **2**



**Option ELE-1 FF**

Provide LED downlight upgrade